



TAURUS PMD

PORTABLE MISSION DISPLAY



The Borsight Portable Mission Display (PMD) is a Samsung-Borsight Collaboration for capable, rugged, affordable situational awareness (SA), and secure tactical data link communications with BLOS/LOS capabilities.

OPERATIONAL ADVANTAGES

- **Enhanced Situational Awareness & Threat Avoidance**
 - EFB/EKB functionality
 - Tactical Airlift Mission Software Suite (TAMSS) integration for RTIC/GSAC
 - Rapid implementation of tactical data link communications with dynamic threat detection/avoidance overlays, and streamlined airborne operations including tracks, threats, mission tasking, free text, and imagery
- **Classified Connectivity In the Air or On the Ground within DoD Cybersecurity Requirements**
 - SIPRNet capable
 - NSA Commercial Solutions for Classified (CSfC) certification
 - DualDAR (Data at Rest) double independent encryption for mobile devices to meet security needs without being cumbersome
 - Allows secure COMMs away from the cockpit
 - Unclassified when powered off
- **Easy to Implement & Use**
 - Already flying on Global Lightning, RTIC, and GSAC
 - C-130 and KC-135 aircraft
 - PIVOT Mount certified for all AMC aircraft
 - Design guided by MAF Aircrew feedback
 - Touch screen functionality (with USAF gloves or smart pen) with smart activation of relevant screens for improved task flow during flight operations
- **Rugged, Mission-Ready Tablet**
 - Highest performance processor and graphics for maximum responsiveness
 - Ruggedized IP68/MIL-STD-810H Tab Active3 and PIVOT Case
 - Minimized cost, size, weight, and heat
 - Extended battery life for flexible usage in and out of the cockpit
 - Easy to swap among crew members



MULTI-PLATFORM READY



C-17



KC-135



C-130H/J

TABLET SPECS

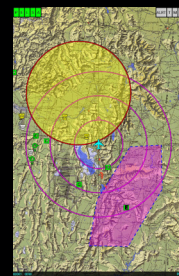
Processor:	Octa Core (2.7Ghz / 1.7Ghz)
Data Storage:	64 GB internal MicroSD (up to 1 Terabyte)
RAM:	4 GB
Operating System:	Android 10+
Resolution:	1920 x 1200
Display Area:	8.0" diagonal (WUXGA)
Data Interfaces:	USB 3.1 Ethernet - 1 port w/ cable
Touchscreen:	Yes
Glove Compatible:	Yes
Keyboard:	Virtual on-screen QWERTY
Bezel Keys:	Soft keys on screen
Brightness:	0.5 - 480 nits
Operating Temperature:	-20 to 71 °C continuous
Storage Temperature:	-40 to 85 °C
Size:	5.0" x 8.5" x 0.4"
Weight:	0.95 lbs.
Power:	12-28 VDC w/ adapter cable
Battery:	11+ hrs (5,050 mAh)

TAMSS MISSION SOFTWARE

Data link Overlays from Link 16, SADL, AF Satcom, Iridium Certus, and SpaceX STARLINK



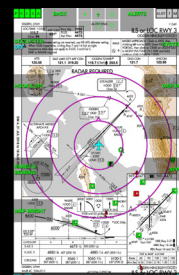
Completely Integrated for use with JGPS, FalconView, and PFPS (example of FalconView Drawing File shown)



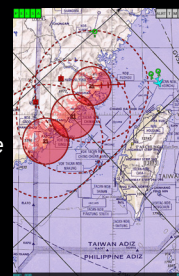
Satellite Imagery is Geo-Referenced with Air Drop Estimate (ADE) Overlay



Electronic Flight Bag utilizes Geo-Referenced NGA/FAA approach plates and charts. Aero App compatible with Government owned EFB



Calculated Dynamic Threat Distance



Correlated and Geo-Referenced Threat Overlays along with Calculated Dynamic Threat Distance

